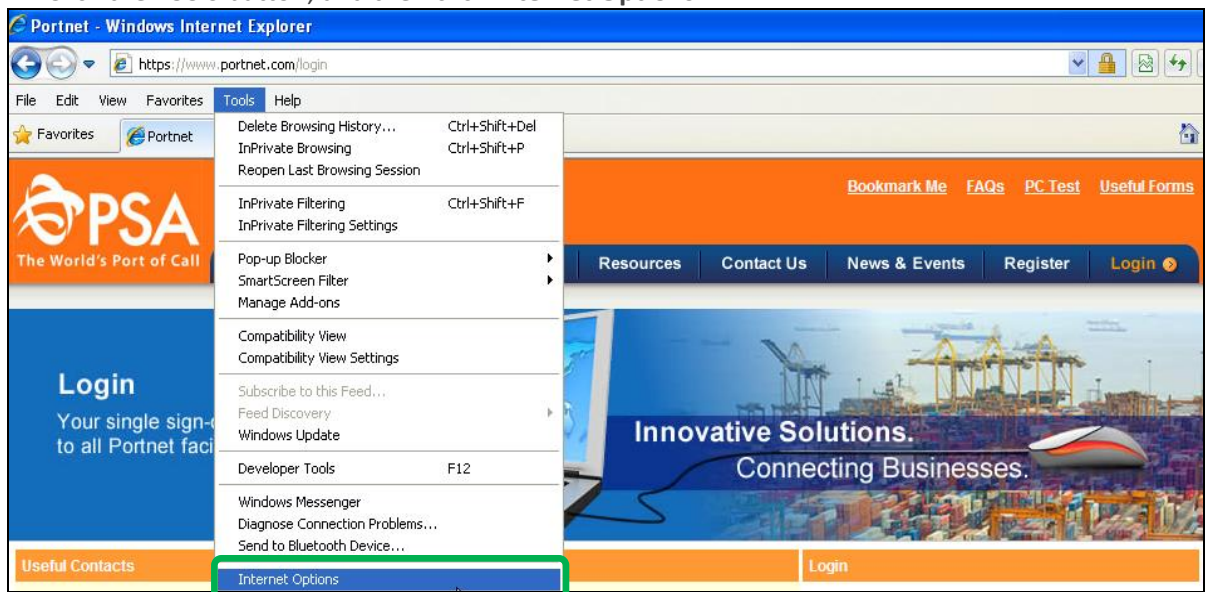


### Why is my Portnet password saved in my browser?

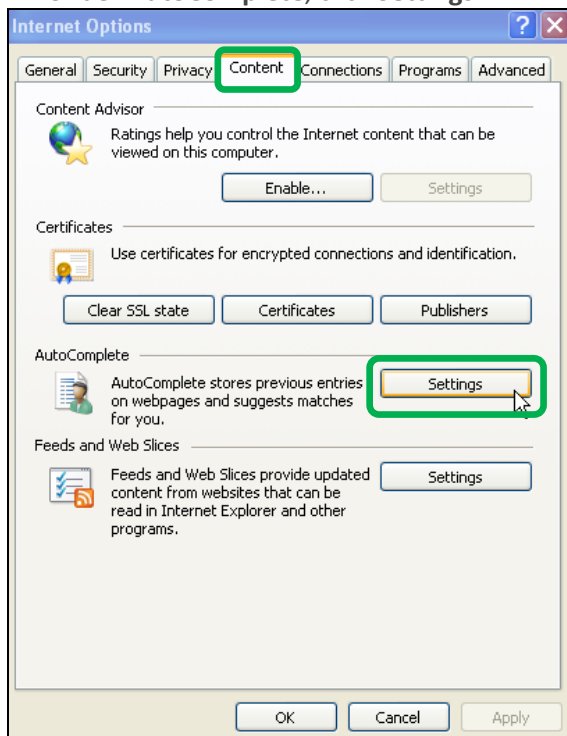
There is a feature in Internet Explorer called **AutoComplete** that stores passwords and other information that you type into web form fields. When you turn on AutoComplete, Internet Explorer will automatically fill in the fields you type into web forms frequently. Your login credentials may be automatically entered for anyone else who uses your computer and accesses the same sites. Hence, we recommended that you do not use this feature to save your Portnet password for security reasons & to avoid not recalling your password during password change that needs to be done every 90 days.

### How do I disable the AutoComplete feature?

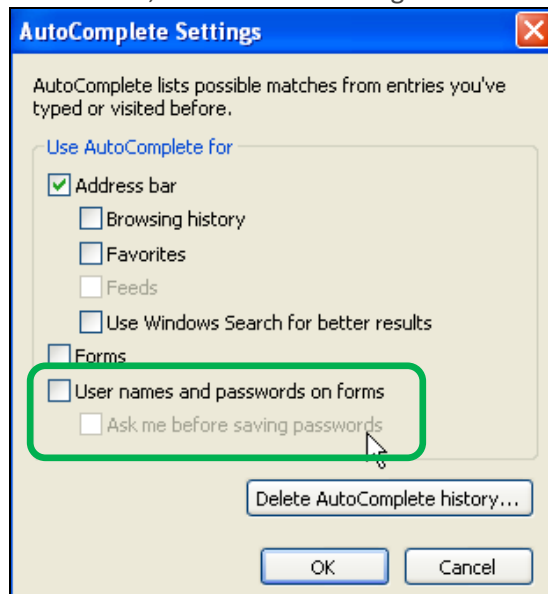
1. Open Internet Explorer.
2. Click the **Tools** button, and then click **Internet Options**.



3. Click the **Content** tab.
4. Under **AutoComplete**, click **Settings**.



5. De-select the check boxes for **User names and passwords on forms**, and **Ask me before saving password**.
6. Click **OK**, and then click **OK** again.



**Note:** Even if you turn off **AutoComplete**, or just the option to save user names and passwords in **AutoComplete**, any passwords that have already been stored will remain. To delete these, go to the **General** tab and click the **Delete** button in the **Browser History** section to get rid of stored passwords.